



# Triumph Aerostructures - Vought Integrated Programs Division

A Triumph Group Company

## Military Programs



Triumph Aerostructures is an award-winning aerospace manufacturer. Our expertise is as a Tier I Integrator - filling the gap between prime contractors and traditional subcontractors by integrating the supply base and providing large, complex aerostructures on a turnkey basis.

We design and build aircraft tail sections, wings, fuselages and other structural components. The last time you took a flight, chances are Vought helped build the aircraft. We are proud to call the aviation industry's leading prime manufacturers our customers.

Triumph Aerostructures' heritage can be traced to the first producers of military aircraft in the United States. Today our structures are on a variety of platforms ranging from the B-2 Spirit to the UH-60 helicopter.

Our rich history stems from a world-class family tree: Grumman, Northrop, Stinson, Avco, Textron, and Chance Vought. We've been working to advance flight by developing life-of-program relationships with our customers and helping them to deliver some of the most innovative and cost-efficient aircraft flying today. Flawless execution is what we strive for in all of our endeavors.

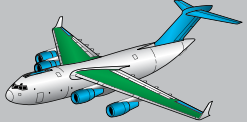


### C-5 Galaxy



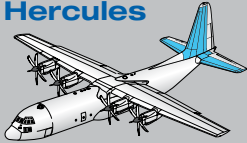
- Flight control surfaces – Dallas, Texas
- Other structural components – Dallas, Texas
- CF6 Engine transcowls – Milledgeville, Georgia

### C-17 Globemaster III



- Tail section (includes vertical and horizontal stabilizers), engine nacelles, and universal aerial refueling receptacle slipway installation (UARRSI) – Dallas, Texas
- Ailerons, rudders, elevators, horizontal spars and engine cowl doors – Milledgeville, Georgia
- Internal wing structure (includes spar webs, spar caps and stringers) – Brea, California

### C-130J Super Hercules



- Tail section – Nashville, Tennessee

### E-2C Hawkeye



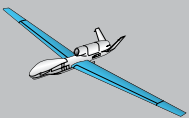
- Various components – Milledgeville, Georgia
- Wing panels – Brea, California

### EA-6B Prowler



- Various components – Milledgeville, Georgia

### Global Hawk



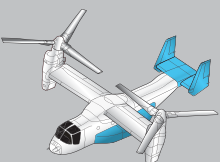
- Wings – Dallas, Texas
- Wing components – Milledgeville, Georgia

### UH-60 BLACK HAWK



- Cabin structures for UH-60M, S and L variants – Dallas, Texas
- Cabin structure components – Milledgeville, Georgia

### V-22 Osprey



- Empennage, ramp and ramp door – Dallas, Texas
- Side panels, sponsons and landing gear doors – Milledgeville, Georgia

-  Triumph Aerostructures-Produced Integrated Aerostructures
-  Triumph Aerostructures-Produced Components / Parts